

# CORPORATE PROFILE



**salvagnini**



# WHAT WE DO

# SOLUTIONS FOR SHEET METALWORKING



**BENDING**



**PUNCHING**



**LASER**

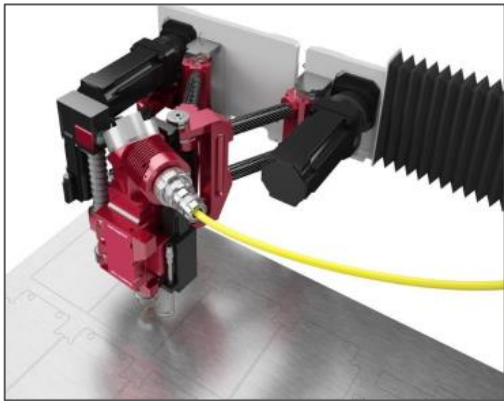
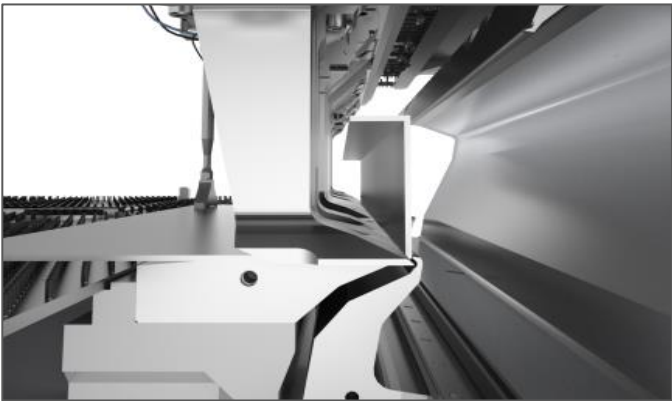
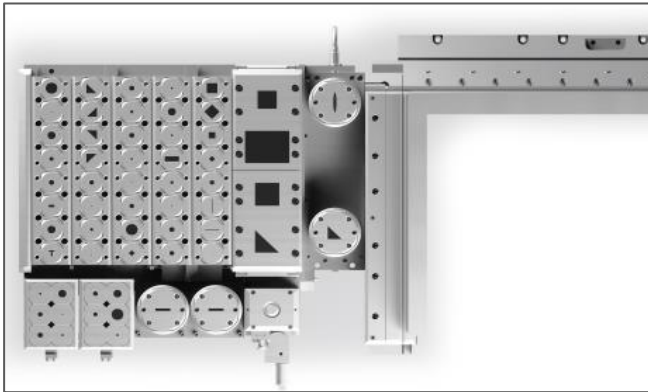


**LOGISTICS**



**SOFTWARE  
CNC**

# EQUIPPED WITH UNIQUE TECHNOLOGIES





# WHO WE ARE



**1510**  
employees



**333**  
mil € turnover



**5300**  
systems in 75 countries

# EUROPE

**1 holding**  
Italy

**11 sales offices**  
Italy, Austria, France,  
Germany, Poland,  
Sweden, Denmark,  
Finland, Spain, Russia,  
UK

**4 production plants**  
Italy (3), Austria

**15 service centers**



# ASIA AND MIDDLE EAST

## 9 sales offices

Japan, PR China (3),  
South Korea, Thailand, India,  
Malaysia, UAE

## 12 service centers





# AMERICAS

## **4 sales offices**

Canada, USA, Brazil, Mexico

## **4 service centers**

Canada, USA, Brazil, Mexico



# PLANTS

Salvagnini Maschinenbau G.m.b.H. (Erlangen) Salvagnini Robotica S.p.A. (Avellino)



Salvagnini Robotica Spa. (Brendola ) Salvagnini Italia S.p.A. (Sarego)

Total area: **74.000 m<sup>2</sup>**



# HISTORY AND MILESTONES



● **1977**

First P4 panel bender



● **1978**

First S4 punching and shearing system

● **1979**

First FMS  
S4+P4



● **1985**

“Lights-out” factory

● **1997**

“No-teach” robot application



● **2001**

Fully automated flexible robotic cell



**2008**

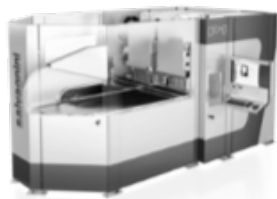
Fiber laser



● **2011**

Kinetic press brake

**salvagnini**

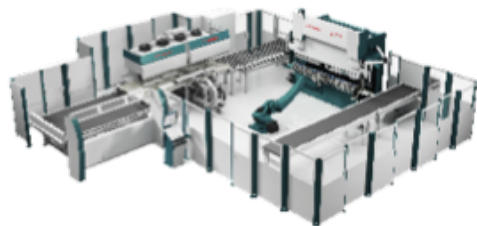


**2013**

Electric panel bender

**2014**

FlexCell FMC  
Flexible manufacturing cell



**2016**

Framebender Cell



# R&D CENTERS

# SALVAGNINI ITALIA



**Group HQ**

**Sales and after-sales HQ for EU, MENA, ASEAN.**

**Production facility:**

**716 employees**

**R&D and manufacturing plant**

- 45.600 sq.m. of covered area
- 2.200 sq.m. of show room
- Laser
- Panel bender
- Punching system
- Software
- Integrated solution



# SALVAGNINI ITALIA



**Research & development center** CNC control, office and machine software, electronics

**Application center** for **product redesign** or feasibility analysis, innovative manufacturing solutions, factory & process optimization and sales engineering.

**Academy** for technician coaching, customer basic and advanced training in technologies, software, use, maintenance (all products).

**Services:** project management, technical support for all subsidiaries & agents, spare part stock, machine overhaul, renews.

# SALVAGNINI MASCHINENBAU



**Sales branch** for Austria.

**Service branch for** Austria, Czech Republic, Slovakia, Hungary, Romania, Bulgaria.

**Production facility:** 18.200 sq.m. of covered area.

**415 employees**

**Manufacturing unit** for panel benders.

# SALVAGNINI MASCHINENBAU



**Research & development center** for advanced bending technologies.

**Application center** for product redesign, feasibility analysis, special requirements or cycles.

**Academy** for technician coaching, customer basic and advanced training in technologies, software, use, maintenance of panel benders.

**Services:** project management, technical support for all subsidiaries & agents, spare part stock, panel bender overhaul, renews.

# SALVAGNINI MASCHINENBAU

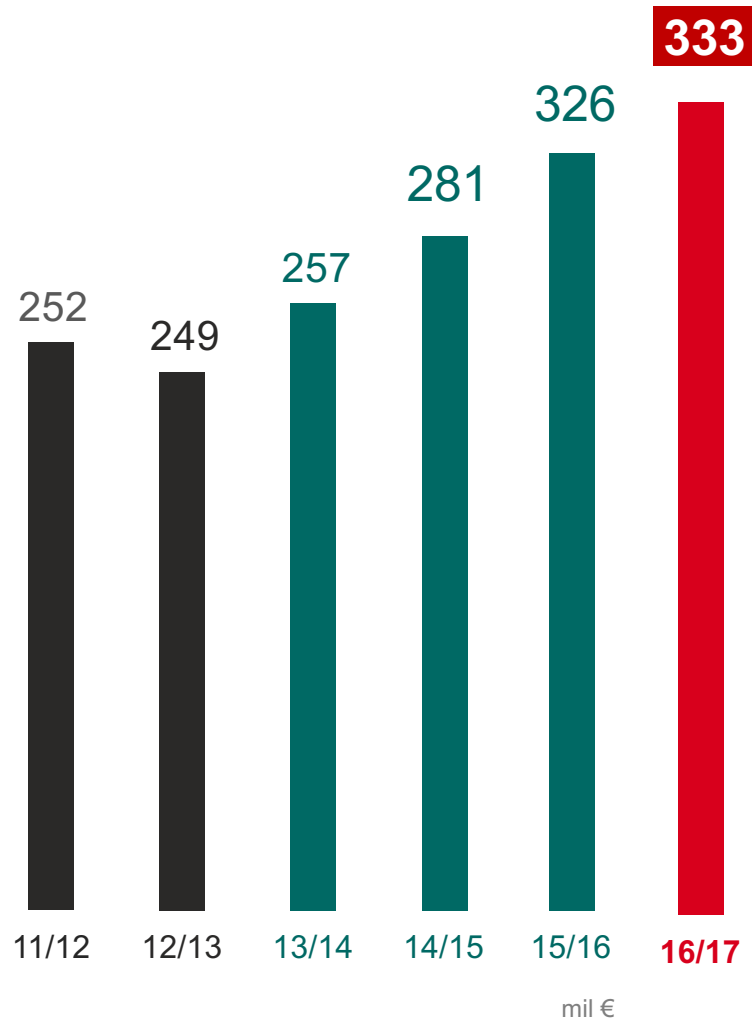
The biggest manufacturing plant for panel benders





# NUMBERS

# TURNOVER

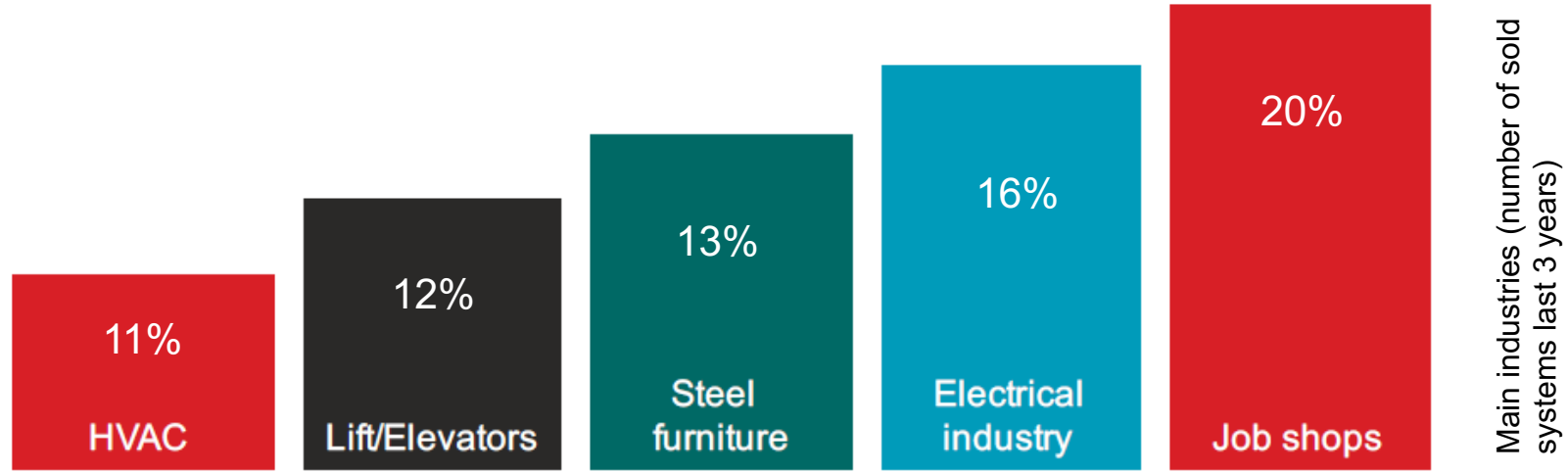




**159**  
different sectors



# 159 SECTORS



Heating, Ventilation  
Air Conditioning  
Lighting  
Vending machines  
Automotive  
Hoods

Refrigeration  
Electrical industry  
Lifts  
Doors  
Job shops  
Catering equipment

General manufacturing  
Home appliances  
Laboratory equipment  
Shop furniture  
Road safety signals  
Advertisement displays

Building technologies  
Safes  
Workshop furniture  
Painting cabins  
Agricultural equipment  
Cutlery





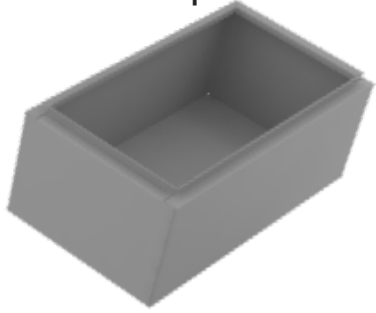
# PRODUCT RANGE

# AUTOMATIC BENDING: PANEL BENDER

## P4

---

Automatic panel bender



P40



## P4lean

---

Lean panel bender

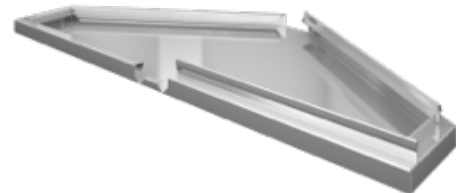


P40

**salvagnini**

# PANEL BENDER

**P40** salvagnini



## P2lean

Flexible panel bender



## P1

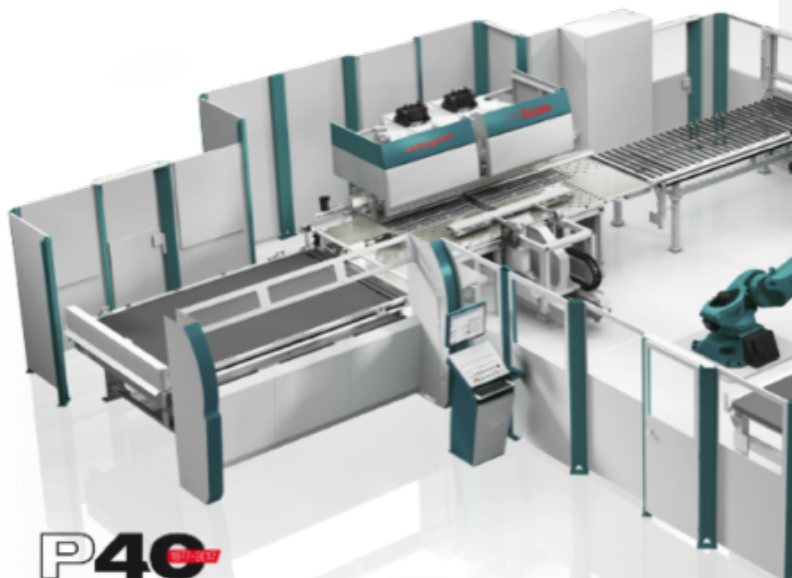
Electrical panel bender



**P40** salvagnini

**salvagnini**

# FRAMEBENDER



**FBlean**

Framebender

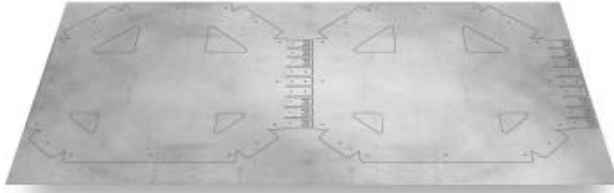


# PUNCHING

## S4

---

Punch-shear



## SL4

---

Punch-laser cutting

# SYSTEMS

## FlexCell

---

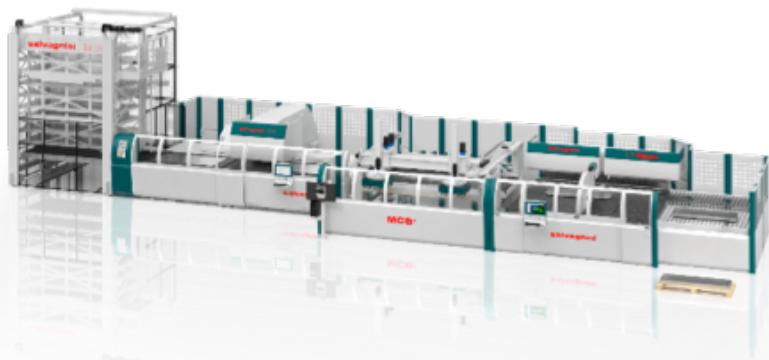
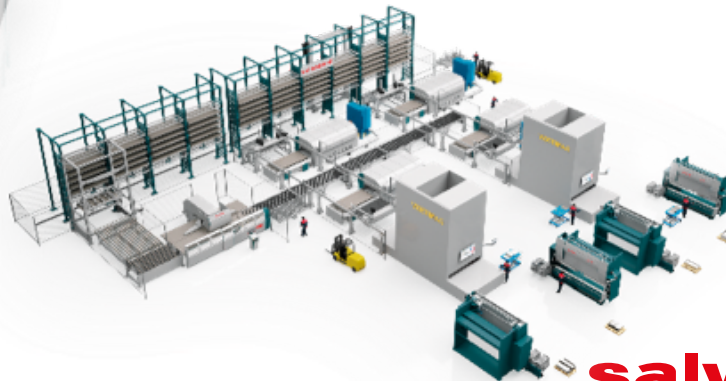
Flexible manufacturing cell



## FMS

---

Flexible manufacturing line



# AJS®

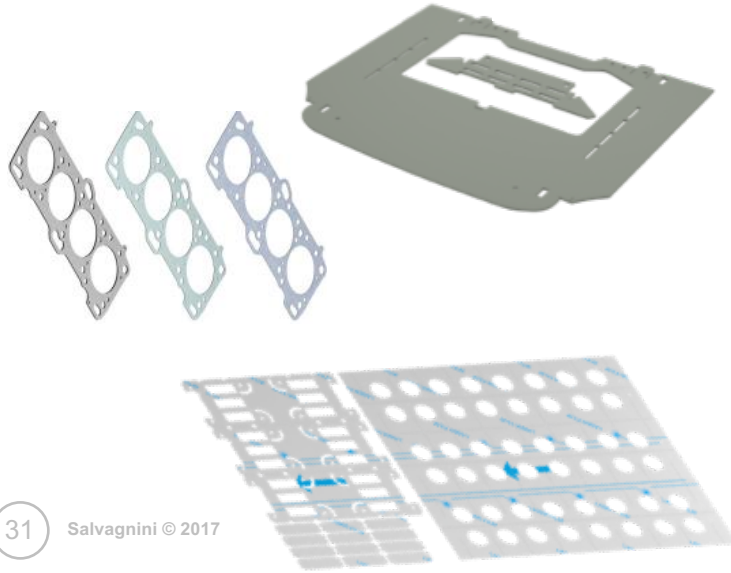
---

Automated factory

# FIBER LASER

## L3

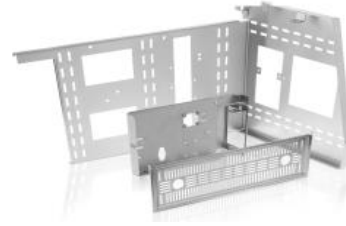
Fiber laser



## L5

High dynamics fiber laser

# PRESS BRAKE



**ROBO***former***ER**

Robotic bending cell

**B3**

KinEtic press brake



**salvaglini**



# LOGISTICS

## MV

---

Automatic pack warehouse



## MTW

---

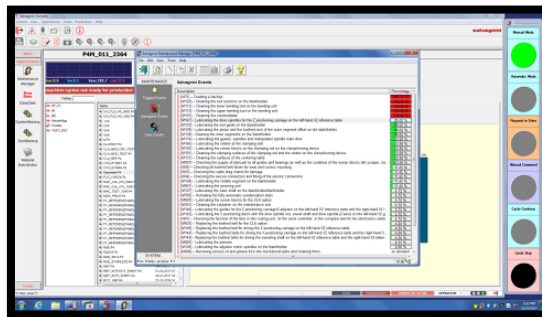
Mini pack warehouse for laser

# SOFTWARE



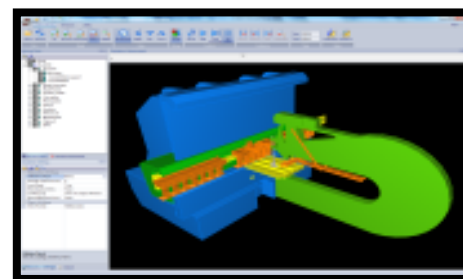
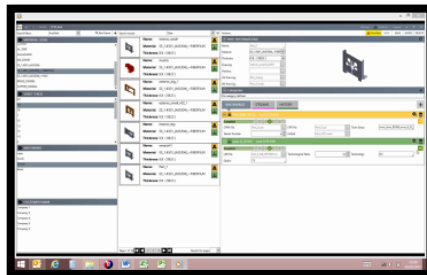
## MACHINE SOFTWARE

For safe and easy interaction



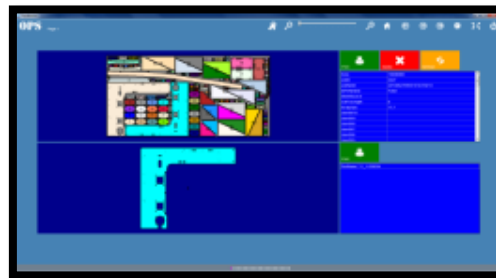
## OFFICE SOFTWARE

For making programming simple and automatic



## PROCESS SOFTWARE

For coordinating production & controlling performances



# CUSTOMER CARE SERVICES



# The IoT project **LINK**





# MISSION , VALUES

# MISSION

*to be the reference  
for applying intelligence  
to sheet metalworking.*

# VALUES

*Dependability*

*Proximity*

*Forward thinking*

# THANKS

