



The new hydraulic C-frame presses series C/70 are able to achieve the highest levels of productivity, quality and accuracy

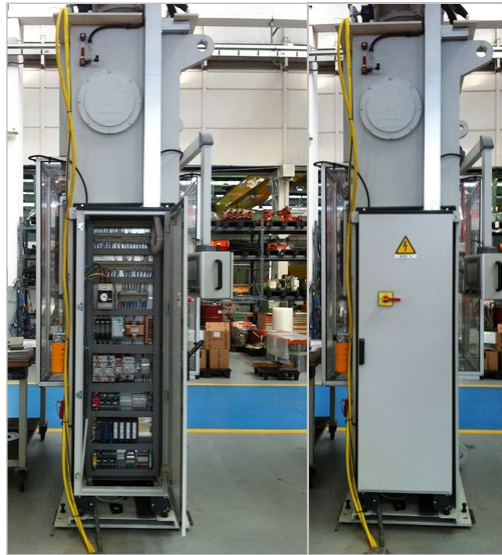
Up to 700 kN, the C 70 serie is the ideal solution for the drawing of small size parts in aluminum, stainless steel and special alloys. The machine is constructed with a monolithic, completely welded and normalized “C” frame, with both tank and electrical cabinet integrated in the structure.

Main features:

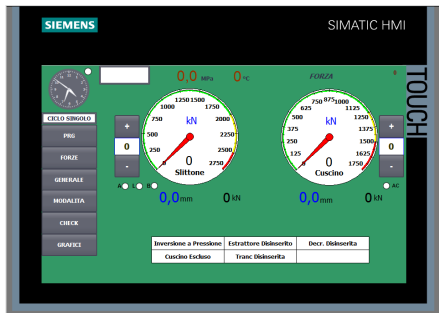
- High rigidity and reduced dimensions;
- High precision guiding system with antifriction prismatic guides;
- High ratio between performance and installed power



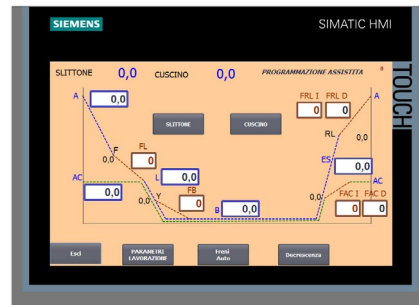
Advantages in respect to the previous version:



Electrical panel on the rear side



Aided programming screen



Drawing cycle screen
(main slide / cushion force)

- Optimized hydraulic circuit, no longer placed inside the structure but, as in the 4 column versions, in the upper part of the machine; in this way, in addition to an easier access to the hydraulic power pack, the pump and the valves are closer to the cylinder, to the advantage of the press reaction times;
- With this new configuration the overall dimensions are even more reduced: the electric panel is no longer mounted laterally to the structure but on the rear side, in order to make any maintenance operations easier also with eventual automatic loaders;
- The press is more compact: the total height changed from 4.250mm to 4.000mm by keeping the same values of main slide and cushion stroke and daylight opening;
- Thanks to a further optimization of the hydraulic circuit, with the same performances the machine uses even less energy;
- The new Siemens TP900 programming panel is larger (9 inches) and is getting easier to create new working programs with the help of graphics;
- The press is now of 70 tons, 10% more than the previous model;
- Due to the use of a larger displacement pump, the working speeds are higher.