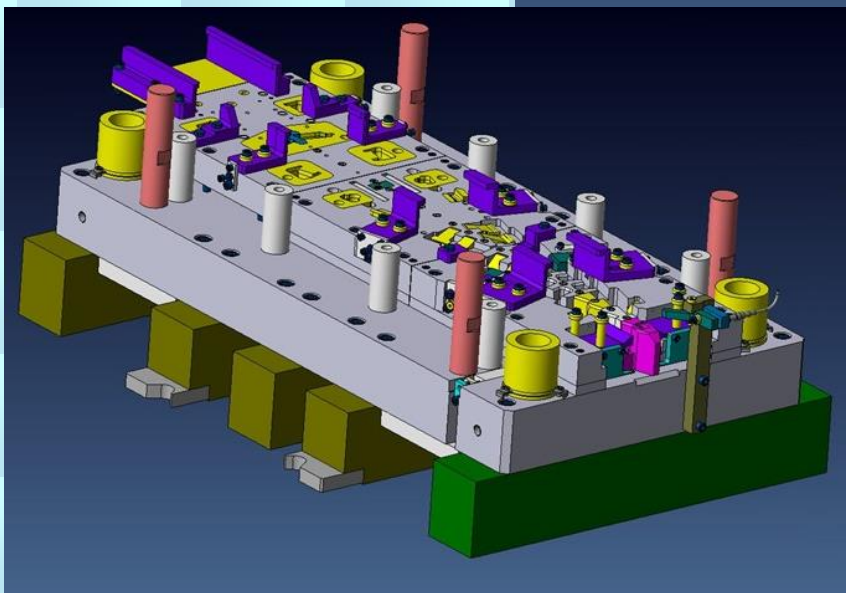
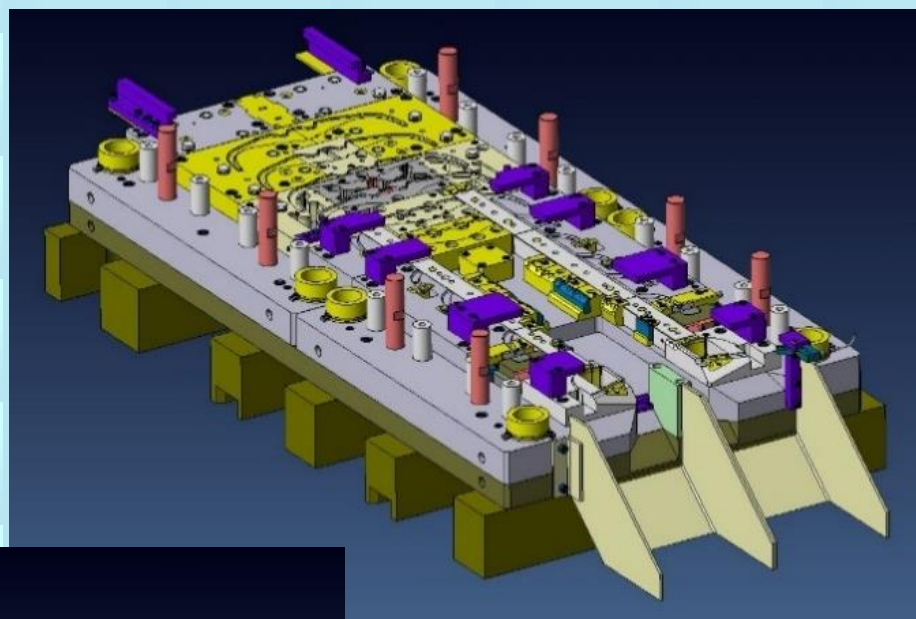


Meccanica



Zanoli Srl

DIES FOR COLD METAL FORMING
Blanking, Deep Drawing, Progressive and Transfer





HISTORY

Founded in 1998 is specialized in the design and the production of dies for the cold processing of metal sheet. Specialized in the design and manufacture of dies using modern systems design, construction and testing, both functional and dimensional the company has invested on the property department with the scope to support the necessity of the market. Always close to the necessity of his customers, the technical office is supporting the R&D customers department to develop components in an efficient way to increase quality and productivity.



VISION

The Mechanics Zanolì has a simple creed:

We believe that cooperation, quality and service are the fundamentals of our company. Our vision is to be partner of our customer winning together the challenges of the future.

Our strong points:

- **Price:** competitive in according with the same technical solution connected to the volume
- **Quality:** always in line with the necessity of the customer thanks to the utilization of the advanced technologies punishable only with the use of technology
- **Reliability and Maintainability,** in order to increase the productivity of molding plants;
- **Delivery time:** with the understanding that it is the market, with Time To Market shrinking, to dictate the timing of property department and not the opposite



TECHNICAL COMPETENCE

With the experience of our technical department, we are able to co-participate in the development of the product from design to prototyping to series production. The technical department has 2D and 3D CAD (Figures 2 and 3). We perform dynamic simulations that allow us to identify the different risks during the process of molding and pressing elements (Figure 5 and 6)

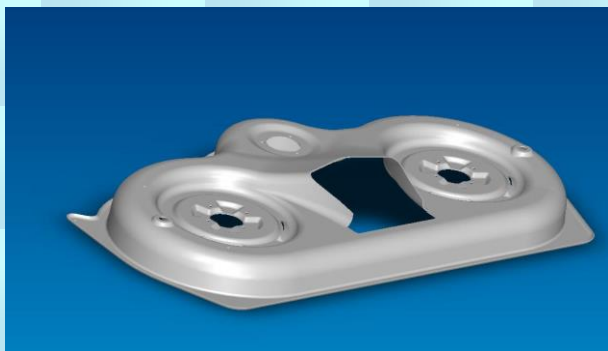


Figure 3 Item sample in 3D

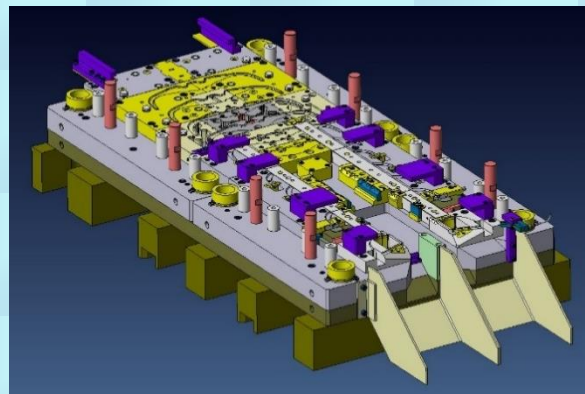


Figure 2 Die developed with 3D CAD

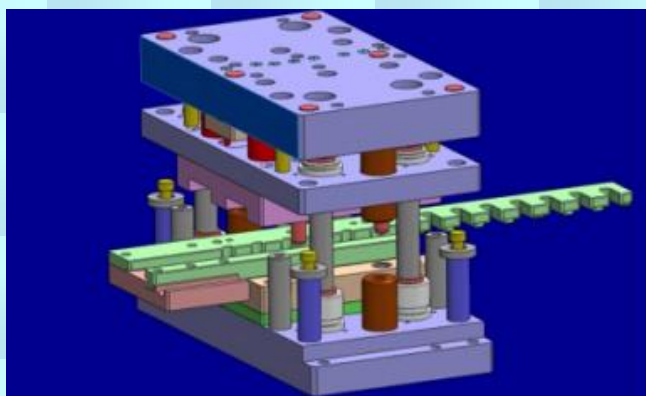


Figure 4 Item sample in 3D

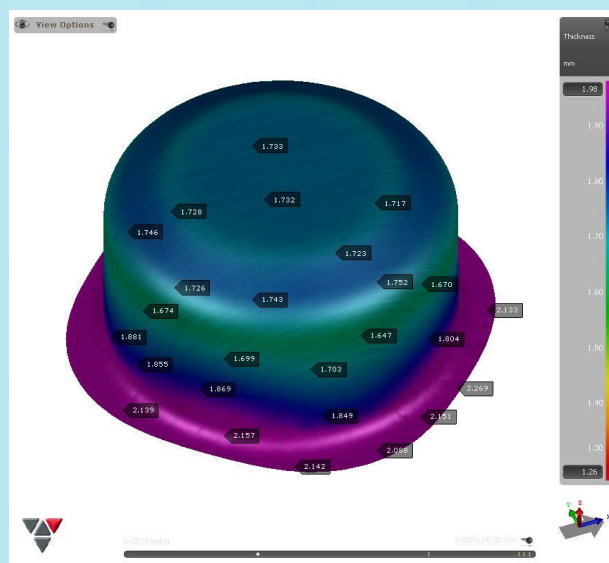
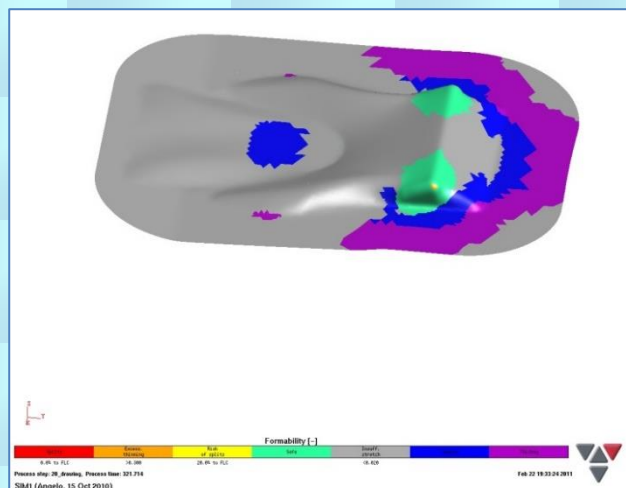
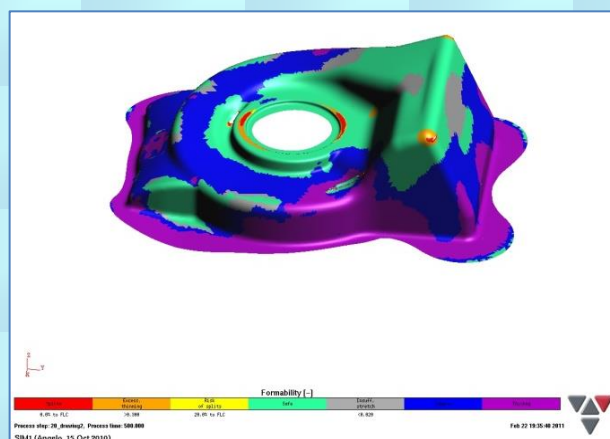


Figure 5 Thickness analysis of deep drawing item



Figures 5 e 6 Deformation analysis during the forming process





PRODUCTION CAPACITY

With our equipment and thanks to the partnership with other companies located on the same area we are able to support the customers during the whole development process .We can provide prototype items and small pre-series supporting the customers in the testing and in the certifications phases of the process .

- Wire erosion machines MITSUBISHI FA20S, MITSUBISHI FA20 MITSUBISHI
- FX20 (X= 500 mm Y = 300 mm Z = 350 mm)
- EDM boring machine SCUMED X= 350 mm Y = 250 mm
- Spark erosion machine ONA (X= 300 mm Y = 150 mm Z = 150 mm)
- Vertical Milling Center DECKEL-MAHO with Linear Motor (X= 1000 mm Y = 600 mm Z = 500 mm)
- Vertical Milling Center GUALDONI (X= 1000 mm Y = 500 mm Z = 500 mm)
- Vertical Milling Center DECKEL-MAHO DMC 103V (X= 1000 mm Y = 600 mm Z = 500 mm)
- CNC Grinding machine ROSA STEEL(X= 1600 mm Y = 700 mm)
- Multi-tool CNC punching machines
- Bed Milling Machine CORREA 2500x1000x1000





QUALITY DEPARTMENT

To maintain a high standard in our production we have invested in several machines to keep under control all the aspect of the tooling development. Our goal is to provide you a performant die taking care to guarantee a long-term life with a standard maintenance

- 3D Measuring Machine ZEISS Contura G2
- Profiles Projector
- Bar Code Project Planning



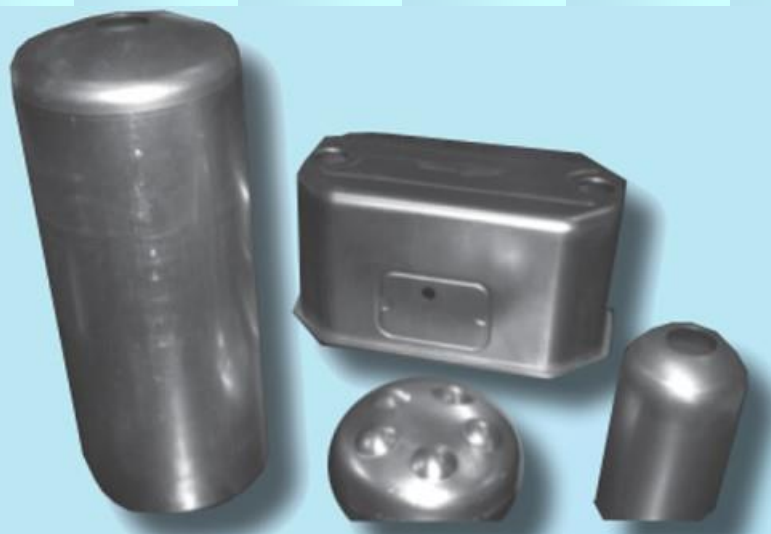
PRODUCT EXAMPLES





Progresszív szerszám
Méreték: 2000 x 700 mm







CONTACT US



MECCANICA ZANOLI

LOCALITA' CARTIERA, 119
28885 PIEDIMULERA (VB) – ITALY

TEL. +39.0324.83746

FAX +39.0324.846105

Email info@meccanicazanoli.it